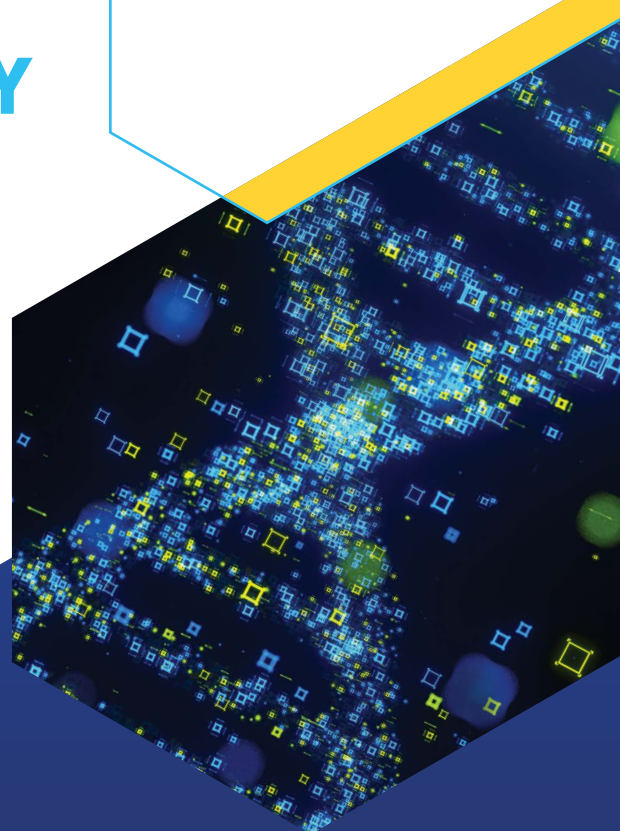


CAS BIOFINDER DISCOVERY PLATFORM™

BREAK DATA BARRIERS IN DISCOVERY BIOLOGY

The right data at the right step

The CAS BioFinder Discovery Platform offers the data and capabilities needed to confidently recommend therapeutic targets and advance drug discovery.



Understand how a disease works

Biologists need a holistic view of a disease's biological context, including pathways, biomarkers, and clinical associations.

Data barriers and impact

Critical information is scattered across literature, patents, and databases, preventing biologists from reaching the early insights they need to make key decisions rapidly.

Prioritize the most relevant targets

Biologists need to cross-reference and connect biomarker data, pathway context, and structural insights to identify proteins associated with a disease and prioritize the most relevant targets.

Data barriers and impact

Disconnected data slows biologists' ability to understand prior research, increasing the risk of advancing low-relevance targets or duplicating efforts in crowded therapeutic areas.

Validate target relevance and function

Biologists need visibility into ligand interactions, assay data, and predictive insights to assess target selectivity and potential safety risks before handing off to the chemistry team.

Data barriers and impact

Buried or incomplete information on pathway-level liabilities, ligand interactions, and toxicity risks skews target validation and increases the risk of advancing weak or high-risk targets.

"CAS BioFinder provides a centralized database for drug discovery. It tells you everything that's been published in patents and literature and has associated pharmacology pathways, metabolism, and nearby chemical neighbors. A lot of people in drug discovery are going to different databases for each line function, but CAS BioFinder is a nice way of centralizing that."

—Structural biologist, CAS BioFinder® development partner



CAS BioFinder powers evidence-based insight across discovery workflows

CAS BioFinder combines human-curated biological data, advanced visualization capabilities, and AI-driven analytics to help biologists get the insights they need, when they need them, without extensive manual data cleaning or triple-checking work.

With CAS BioFinder, you can:

Clarify disease mechanisms

- Explore relevant biological pathways and molecular reactions with direct links to the source material.
- Cross-reference data using sequences, structures, and external identifiers such as NCBI, UniProt, and PDB.
- Investigate a protein's normal role in the human body and changes that occur during a disease state.

Reduce target uncertainty

- Browse through the relevant drug discovery space to review known ligands, clinical trial status, and drug information.
- Explore structural insights and compare ligand binding with interactive 3D models.
- Compare disease expression patterns and identify potential diagnostic indicators using biomarker data.

Build confidence before handoff

- Learn about ligand interaction to understand the mechanism of action using structural and pharmacology data.
- Explore selectivity and toxicity with predictive models and ligand-target screening.
- Dive into assay data and pathway-level liabilities with linked literature and disease context.

Scan the QR code to learn more about how CAS BioFinder can advance your discovery biology workflows.

